



# SNEKKESTAD TUNNEL

## HOLM/NYKIRKE

### CLIENT

Jernbaneverket &nbsp; Utbygging  
Norwegian National Rail Administration

### DESIGNER

Rambøll and Norconsult

### EXECUTION OF THE WORKS

Marti IAV DA

### CONSORTIUM PARTNERS

Marti Contractors Ud., CH-Mooseedorf  
IAV hf, IS-Reykjavik

### LEAD COMPANY AND TECHNICAL LEAD

Marti Contractors Ud., CH-Mooseedorf

### CONSTRUCTION PERIOD

2011 – 2014

### CONTRACT SUM

CHF 65 million

# SNEKKESTAD TUNNEL

## HOLM/NYKIRKE

### SCOPE OF THE WORKS

Double track railroad tunnel

L = 2100 m, A =135m<sup>2</sup>

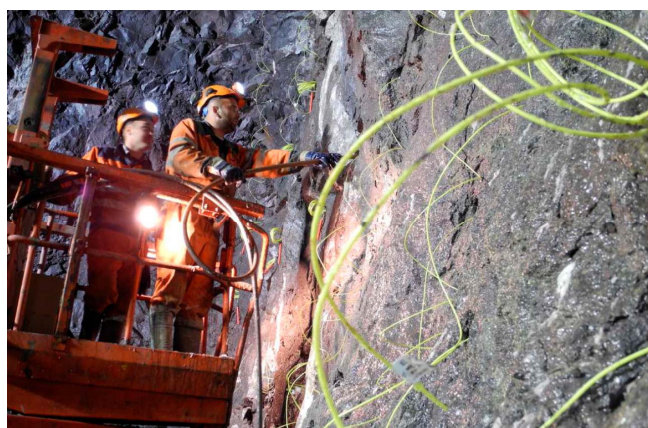
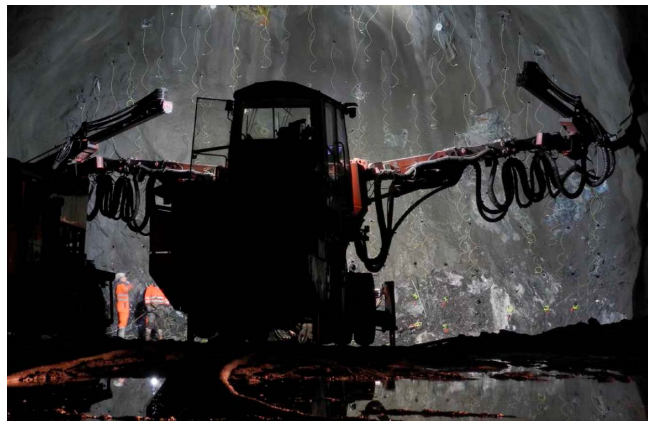
Two escape tunnels with a combined length of 693 m

### SERVICES PROVIDED

- Excavation by drill and blast with a 3-arm jumbo boring rig
- Total volume of rock to be excavated: 310 000 m<sup>3</sup>
- Complete tunnel needs to be pre-injected
- 320m long entrance galleries (53m<sup>2</sup>)
- 380 m long safety galleries (24m<sup>2</sup>)
- Water and frost protection of the main tunnel consists of concrete lining panels with a total surface of 55 230 m<sup>2</sup>

### GEOLOGY

- Basalt (87 % )
- Rhombic Porphyry (13 % )



Marti AS

Karenslyst allé 4b 0278 Oslo Tel. +47 23 12 06 55 Fax +47 23 12 05 10 [www.marti-norge.no](http://www.marti-norge.no) [info@marti-norge.no](mailto:info@marti-norge.no)